

1) CONSTRUCTION:

CONDUCTOR:	22 AWG SOLID TINNED COPPER	NOM. DIA. .025"
INSULATION:	TWO LAYER COMPOSITE POLYOLEFIN, .020 WALL THICKNESS	.065"
PAIRS:	COLOR CODED SINGLES TWISTED WITH FILLERS INTO PAIRS	
SHIELDS:	EACH PAIR SHALL BE WRAPPED WITH AN ALUMINUM POLYESTER FOIL SHIELD (FOIL OUT, 100% COVERAGE) AND SHALL CONTAIN A 24 AWG SOLID TINNED COPPER DRAIN WIRE IN CONTACT WITH THE METALIZED SURFACE. SHIELDS SHALL BE ELECTRICALLY ISOLATED FROM EACH OTHER WITH A POLYESTER TAPE WRAP	.142"
CABLE:	(2) SHIELDED PAIRS PULLED IN STRAIGHT	.142" X .284"
JACKET:	POLYVINYLCHLORIDE, (COLOR, PER CHART 1), .021" NOM. WALL THICKNESS	.184" X .326"

2) PHYSICAL PROPERTIES:

TEMPERATURE RATING, MAX.	75°C
TEMPERATURE RATING, MIN.	-20°C
WT./M', NOM., NET.	37.5 LBS.

CHART 1:

QUABBIN P/N	JACKET COLOR
9720	BEIGE
9722	RED

3) ELECTRICAL CHARACTERISTICS:

SEE PAGE 2

4) AGENCY APPROVALS:

NEC (UL) TYPE CMR
CEC C(UL) TYPE CMR

5) APPLICATION:

T1: LEVELS 1,1A AND 1C INTERCONNECTION COMPLIES WITH ANSI T1.403 CARRIER-TO-CUSTOMER INSTALLATION - DS1 METALLIC INTERFACE AT A MAXIMUM LENGTH OF 200M (655 FT). RoHS COMPLIANT MATERIALS.

NOTE: THIS CONSTRUCTION IS UNIQUELY DESIGNED TO FIT MOST POPULAR RJ-45 CONNECTORS WHEN THE OUTER PRIMARY INSULATION IS REMOVED.

6) PRINT:

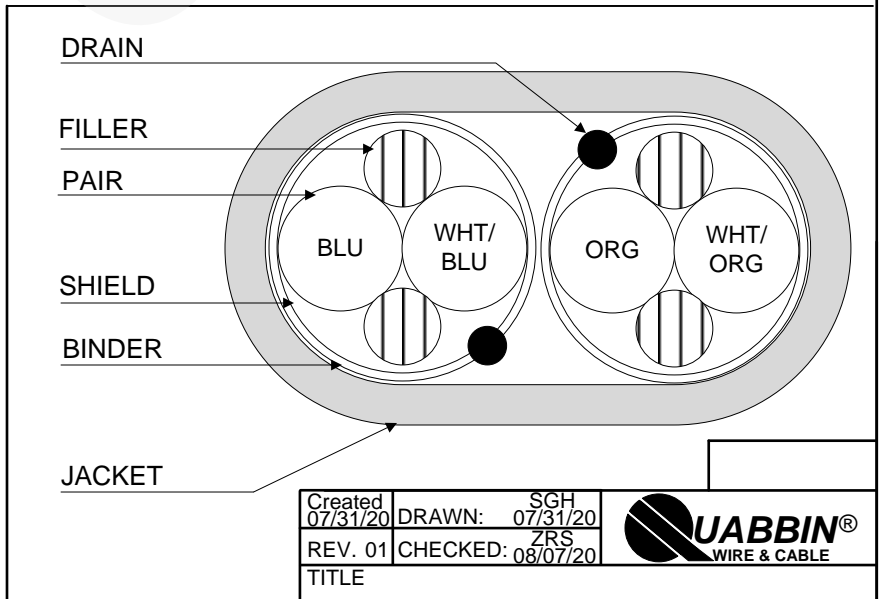
QUABBIN DATAMAX 100 OHM T1 (DS1) CABLE P/N (P/N PER CHART 1) -- TYPE CMR C(UL)US 22 AWG SHIELDED 75C -- RoHS -- (LOT DESIGNATOR) (SEQUENTIAL FOOTAGE)

7) COLOR CODE:

1. ORANGE X WHITE/ORANGE
2. BLUE X WHITE/BLUE

8) PACKAGING:

TO BE PACKAGED AS PER QWC'S STANDARD PACKAGING



Created 07/31/20	DRAWN: SGH 07/31/20	
REV. 01	CHECKED: ZRS 08/07/20	
TITLE T 1 CABLE -- TYPE CMR		
DRAWING#		1 of 2

CUSTOMER APPROVAL:

DATE:

3) ELECTRICAL CHARACTERISTICS:

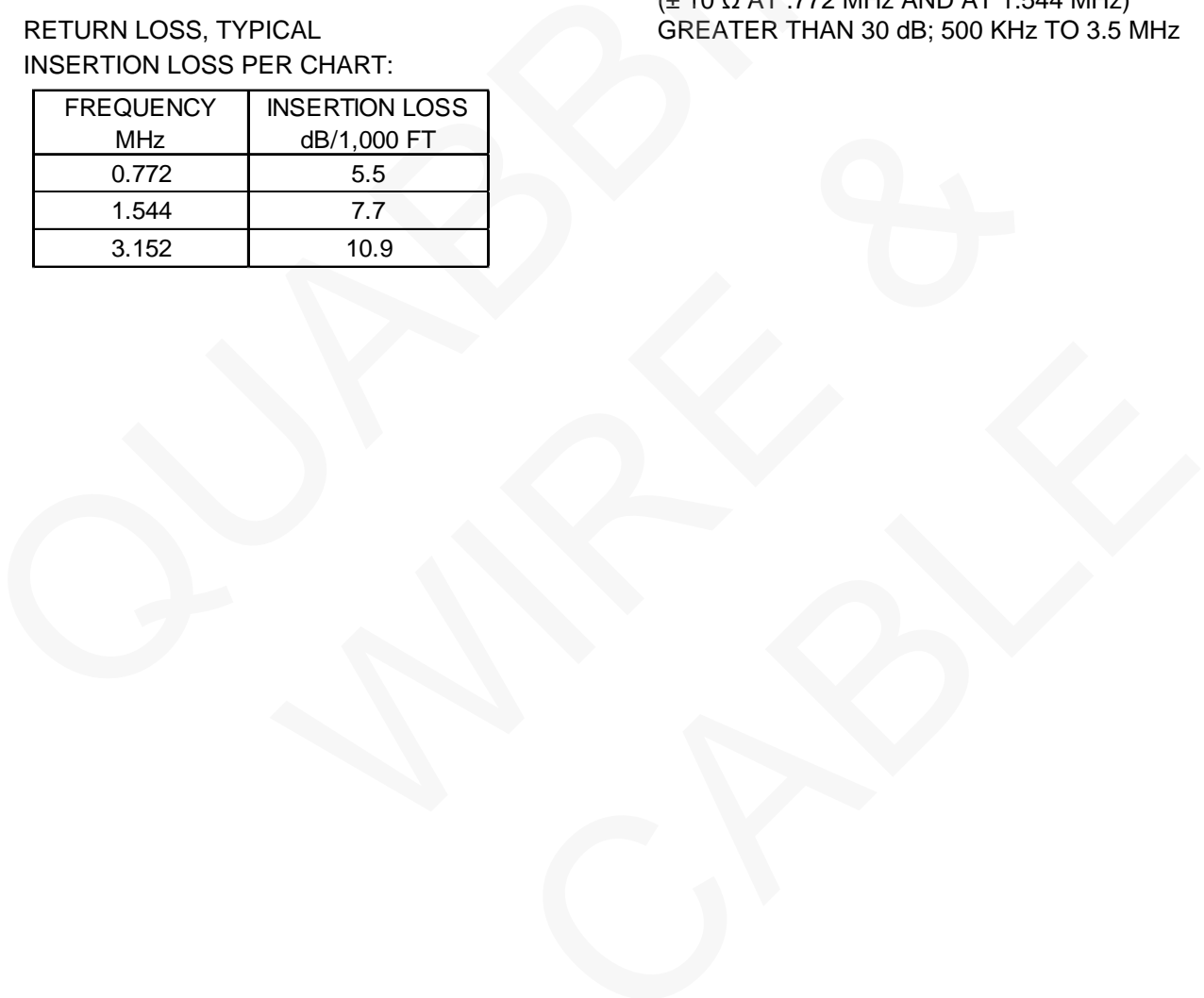
CAPACITANCE, MUTUAL, NOM.
 DIELECTRIC WITHSTANDING, MIN.
 VOLTAGE RATING, MAX.
 NEXT, TYPICAL
 D.C. RESISTANCE, MAX. PER ASTM B258
 IMPEDANCE, CHARACTERISTIC, NOM.

15 PF/FT. AT 1 MHz
 1500V RMS
 300V
 GREATER THAN 60 dB; 500 KHz TO 3.5 MHz
 16.6 Ω/1,000'
 100.0 Ω FROM 500 KHz TO 3.5 MHz
 (± 10 Ω AT .772 MHz AND AT 1.544 MHz)
 GREATER THAN 30 dB; 500 KHz TO 3.5 MHz

RETURN LOSS, TYPICAL

INSERTION LOSS PER CHART:

FREQUENCY MHz	INSERTION LOSS dB/1,000 FT
0.772	5.5
1.544	7.7
3.152	10.9



Created 07/31/20	DRAWN: SGH 07/31/20	
REV. 01	CHECKED: ZRS 08/07/20	
TITLE		
T 1 CABLE -- TYPE CMR		
DRAWING#	QWC0136	2 of 2

CUSTOMER APPROVAL:

DATE: